

Setting up the Mimio Teach

Mimio software needs to be installed first for either configuration. Notebook will be activated by hooking up the teach via a usb, or inserting a dongle.

Two configurations: You can have a Doc Cam in either configuration as well

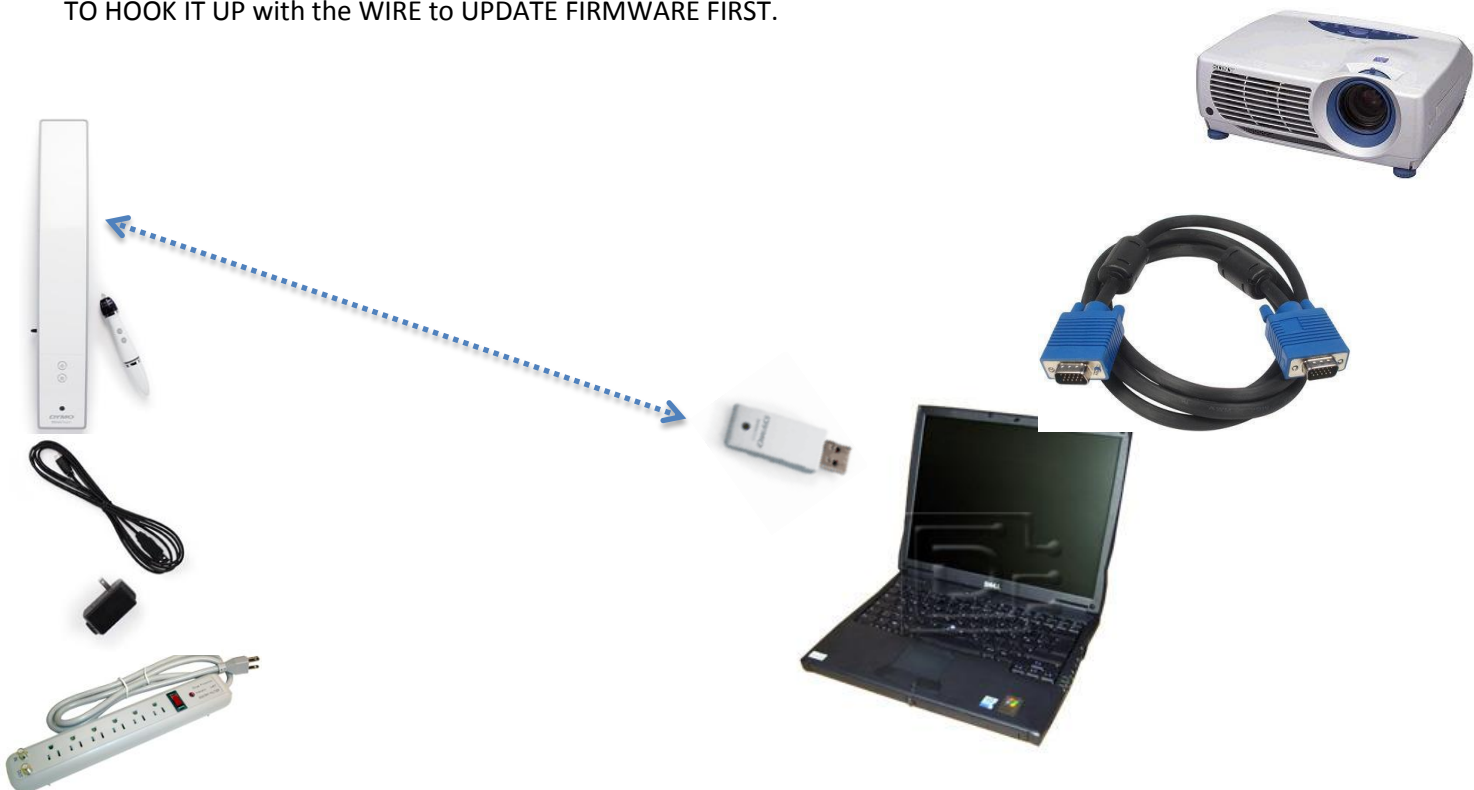
Configuration 1: Wired

The teach bar will be powered via the USB into the computer).



Configuration 2: Wireless

The Teach is powered directly from an outlet. If you use the wireless dongle, you WILL NEED TO HOOK IT UP with the WIRE to UPDATE FIRMWARE FIRST.



Setting up Doc Cams

Two configurations:

Configuration 1

Projector is hooked directly to the laptop or desktop; Doc cam is hooked to computer with USB cord (in this configuration, you need to have the Epson or ELMO software installed with which you can take pictures and annotate what is seen from the Doc Cam).



Configuration 2

Projector is hooked up directly to the Doc Cam Output port, Doc Cam is hooked up with serial cable to computer. No software needed, but you would need an SD card to save images from the Doc Cam. In this configuration, it is easier to remove laptop (one connection vs two).

